



ARCH LIVING

[www.archliving.co.uk](http://www.archliving.co.uk)

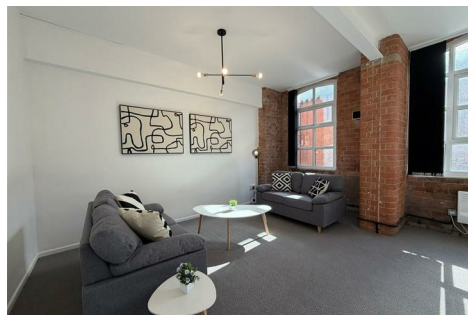
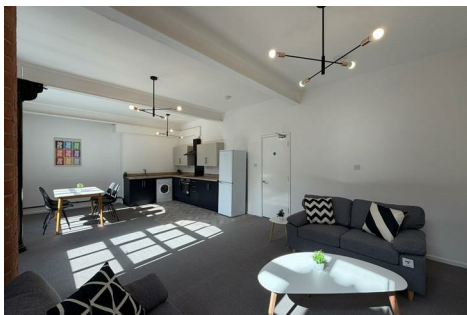


**16 York Street, Leicester, LE1 6NU**

**£1,300 PCM**

One of the most impressive apartments within this exceptional newly refurbished city-centre development, offering students a premium living experience far beyond typical accommodation.

The standout feature of the apartment is its exceptionally large open-plan kitchen and living area, creating the perfect environment for both socialising and studying, with far more space than usually found within student apartments.



127 Clarendon Park Road, Leicester, Leicestershire LE2 3AJ  
T: 0116 270 6699  
[lettings@archliving.co.uk](mailto:lettings@archliving.co.uk)

**ARCH**



ARCH LIVING

www.archliving.co.uk

Energy Efficiency Rating		Current	Potential
Very energy efficient - lower running costs			
(92 plus) <b>A</b>			
(81-91) <b>B</b>			
(69-80) <b>C</b>			
(55-68) <b>D</b>			
(39-54) <b>E</b>			
(21-38) <b>F</b>			
(1-20) <b>G</b>			
Not energy efficient - higher running costs			
<b>England &amp; Wales</b>		EU Directive 2002/91/EC	

Environmental Impact (CO <sub>2</sub> ) Rating		Current	Potential
Very environmentally friendly - lower CO <sub>2</sub> emissions			
(92 plus) <b>A</b>			
(81-91) <b>B</b>			
(69-80) <b>C</b>			
(55-68) <b>D</b>			
(39-54) <b>E</b>			
(21-38) <b>F</b>			
(1-20) <b>G</b>			
Not environmentally friendly - higher CO <sub>2</sub> emissions			
<b>England &amp; Wales</b>		EU Directive 2002/91/EC	



127 Clarendon Park Road, Leicester, Leicestershire LE2 3AJ  
T: 0116 270 6699  
lettings@archliving.co.uk

ARCH